

Kazanım Testi

Describing what people do regularly
Making simple inquiries

1. Read the speech bubble below and answer the question.



Maria

I get up early in the mornings. After having breakfast, I brush my teeth. Then, I go to school on foot.

What is Maria talking about?

- A) Her school life B) Her morning routine
C) Her weekend plan D) Her favorite activity

2. Look at the photos and answer the question.

MARY'S MONDAY ROUTINE

In the morning	In the afternoon	In the evening	At night

Which of the following is NOT correct according to the photos above?

- A) Mary drinks a cup of coffee in the morning. B) Mary does yoga in the afternoon.
C) Mary takes care of flowers in the evening. D) Mary gets out of the bed at night.

3. Lucy, Molly, Rita and Gina are talking about their after school routines on Friday.

Lucy : I join the our English teacher's club.

Molly : I play football at the park.

Rita : I go home because I feel tired.

Gina : I spend time with my mother in her office.

Who stays at school on Friday?

- A) Lucy B) Molly C) Rita D) Gina

4. Read and answer.

Alex : My best friend is Sam. He goes to school at half past seven in the morning. He comes back home at two p.m. and finishes his homework. After that, he arrives at the guitar course at five p.m. and plays the guitar until six p.m. every day. He comes home at seven p.m. He has dinner and then he reads a book. He goes to bed at ten p.m. I love my friend very much.

Which of the following is NOT answered above?

- A) How does Sam go to the school? B) Where does Sam arrive at five p.m.?
C) What does Sam do after having dinner? D) What time does Sam go to school in the morning?

5. Look at the pictures below and answer the question.

AT THE WEEKEND



Adam



Jason



Simon



Matt

Who skateboards at the weekend?

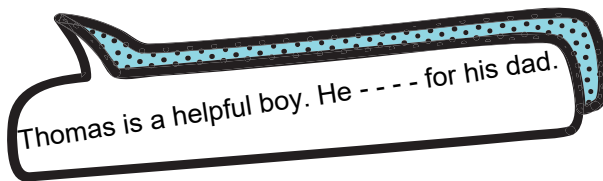
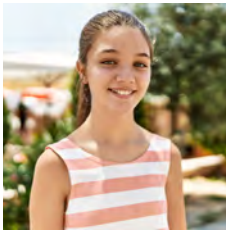
A) Adam

B) Jason

C) Simon

D) Matt

6. Read the speech bubble and answer the question.



Which of the following best completes the sentence above?

A) carries

B) hangs around

C) runs errands

D) attends

7. Read about Sally's life and answer the question.

Sally - - - in a big house with a small garden. She plays basketball in the garden on - - - . She sometimes has a picnic with my friends at the - - - . She has a tree house there. She plays games with my brother.

Which of the following is NOT fill any of the blanks in the paragraph?

A) weekdays

B) backyard

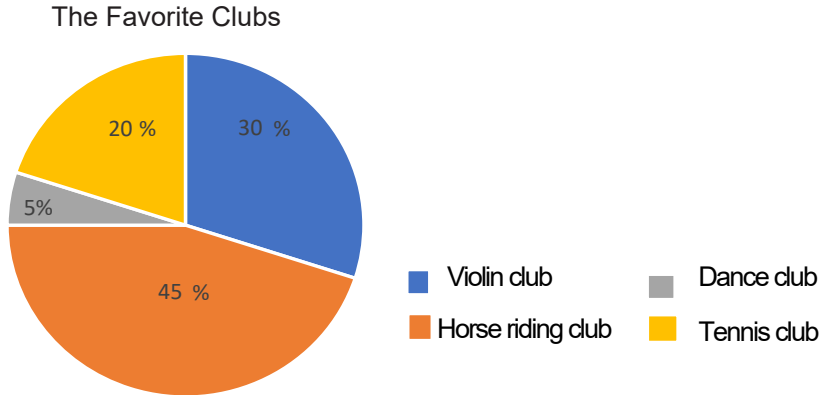
C) lives

D) kitchen

Kazanım Testi

Describing what people do regularly
Making simple inquiries

8. Researchers ask one hundred teenagers about their favorite after school clubs. Here are the results:



Complete the sentence.

The most popular one is - - - -.

- A) Violin club
C) Horse riding club

- B) Dance club
D) Tennis club

Answer the questions (9-10) according to the poster below.



9. Which of the following NOT correct according to the poster above?

- A) People can join the course every day. C) The course starts at half past six p.m. on Mondays.
B) People need to spend £40 for the course per term. D) The course finishes at half past seven p.m. on Mondays.

10. There is NO information about - - - - of the course.

- A) time B) location C) website D) price

Designed by Freepik :)

Prepared by Filiz Çinkaya Civelek:)

www.ingilizceonline.com :)

Answer Key: 1. B 2.D 3. A 4. A 5. D 6. C 7. D 8. C 9. A 10. B